

*A Multi-modal Creative
Arts Therapy'
Intensive Four Days
Training Program
2012 NOV 26 -29
(MON- THU)*



*This program can be counted
towards the Ragamuffin
International Creative Arts Therapy
Certificate Program*

For Enquiry:

Phone: 2881-8860 Fax: 2881 1898

Email: psychology@connexion.com.hk

Website: www.connexion.com.hk



Connexion Psychological Practice Limited

心·悦·坊·心·理·中·心·有·限·公·司

Ragamuffin International



Kit Loring and Carrie Herbert founded the Ragamuffin Project and are the Directors of Ragamuffin International (est 1999), a partnership of Professional Therapists, Facilitators and Consultants with a background in the development of international mental health services, organizational supervision, staff care and retreat programmers. Ragamuffin International is committed to utilising creative, therapeutic and empowering approaches to optimizing individuals, teams, relief organisations and businesses. Our priority is the emotional and psychological well-being of those committed to making a difference around the world.

In Cambodia, Ragamuffin has been pioneering Creative Arts Therapy training and Services since 2001. They are committed to the relief of endemic trauma and mental health problems in children and adults through the promotion and provision of Creative Arts Therapy, Training, Clinical Supervision, Research and Consultancy. They work together with those who aim to empower and sustain individuals and families in the restoration and development of healthy communities in Cambodia and around the world.

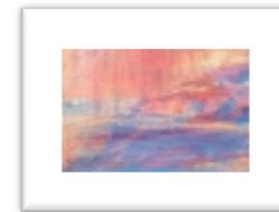


About the Trainers



Kit Loring is a UK State Registered Arts Therapists with a specialism in Dramatherapy. He is also a qualified and registered Clinical Supervisor. As senior partner/practitioner and Co-Director of Therapy Services for The Ragamuffin Project, Kit has developed therapeutic programmes with a broad range of client groups including: Young Offenders and Children with severe behavioural problems; perpetrators and victims of emotional, physical and sexual abuse, children and adults with Autistic Spectrum Disorder and profound and multiple disability and those who have suffered severe brain injury. Kit has also conducted extensive training and supervision programmes in Cambodia, Indonesia, Peru, India, Russia and Finland and provided training workshops at conferences in Germany, Greece, H.K. & Singapore.

Carrie Herbert is the Co-Director of Arts Therapy Services for The Ragamuffin Project (INGO). Arts Psychotherapist, Trainer and Supervisor with extensive experience in the following areas: refugees, mental health, trauma and abuse, post conflict and emergencies, therapeutic training, clinical and organisational supervision. International consultancy work conducted in India, Singapore, Indonesia, H.K. and Peru. Based in Cambodia, Carrie manages Ragamuffin's Creative Arts Therapy Centre.



A Multi-modal Creative Arts Therapy' - Intensive Training Programme

DATE: NOV 26, 27, 28, 29

By translating real life experience into self-made art works, Arts Therapy enables people to unlock and explore their inner world. Drama and dance, storytelling, poetry, music and the visual arts all serve to provide insight and enable the person to face their fear, tell their story, express deep emotion and experience change in their lives. AIM: This course will equip participants with basic, essential skills in the practice of 'The Healing Arts'. These skills will be learnt and practiced in training and then applied to their work setting or placement under supervision. This short training does not qualify participants as professional Arts Therapists (according to internationally recognised standards) but it does enable participants to practice within the level of competence. This foundation training provides a basis for advanced training in Creative Arts Therapy in the future.



The course will enable trainees to:

1. Gain confidence and competence in the use of the arts and creative expression.
2. Realise the therapeutic potential of the arts through personal experience.
3. Gain supervised experience in the therapeutic application of the arts with clients.
4. Develop skills in the use of the arts in therapy and counselling.
5. Increase self-awareness and nurture personal growth.

Details of workshop

A Multi-modal Creative Arts Therapy' - Intensive Training Programme

Date: Nov 26, 27, 28, 29(Mon- Thu)

Time: 9:30am - 5:30pm

Venue: To be advised

Fee:

HK\$ 4600 (4 Days)

HK\$ 4400(Early bird before 31 Aug, 2012)

HK\$ 3500 (First 3 Days)

HK\$ 3350(Early bird before 31 Aug, 2012)

HK\$ 2400 (First 2 Days)

HK\$ 2300(Early bird before 31 Aug, 2012)

***All materials will be provided**

Method

The training is heuristic in nature - learning through experience observation and reflection. A combined Arts approach will be used in exploring the subject. Whilst the trainer will guide and oversee the workshop, the group will be considered partners with each other and the trainer in the learning process.

Language

The lecture and workshop will be conducted in English.

Reminder

Remember to dress comfortably so that you can move freely or sit on the floor. You are suggested to walk or move around in your bare feet. If you prefer wearing socks, please put on the non-slip one.

Important Notes

* Applications will be processed on a first-come-first serve basis * Application will only be secured with payment. * Fees are non-refundable. * Note of acceptance will be sent to applicants by email within 2 weeks upon course commencement. * Course receipt will be distributed to applicants on at the workshop. * Certificate of Attendance will be presented to participant. If black rainstorm warning signal or typhoon signal no. 8 is hoisted at or after 6:15a.m., any training activity will be cancelled. Details of postponement or other arrangements will be announced afterwards.

Registration Form

A Multi-modal Creative Arts Therapy' - Intensive Training Programme

Date & Fee:

November 26- 29, 2012 (Mon- Thu)

HK\$4600 (4Days)

HK\$4400(Early bird before 31 Aug, 2012)

HK\$3500 (First 3Days)

HK\$3350(Early bird before 31 Aug, 2012)

HK\$2400 (First 2Days)

HK\$2300(Early bird before 31 Aug, 2012)

Date: _____

Please return the completed form with cheque payable to "Connexion Psychological Practice Ltd." by mail, or in person to the following address:
Suite 1203, Island Beverley, 1 Great George Street, Causeway Bay, H.K.

Title: Professor Dr. Mr. Mrs. Ms.

First Name: _____

Last Name: _____

Correspondence Address: _____

Tel: _____

Fax: _____

Email: _____

Organization: _____

Position: _____

(CE & CME points are pending)

Signature: _____

Date: _____

* Please tick as appropriate. * Fee paid is not refundable